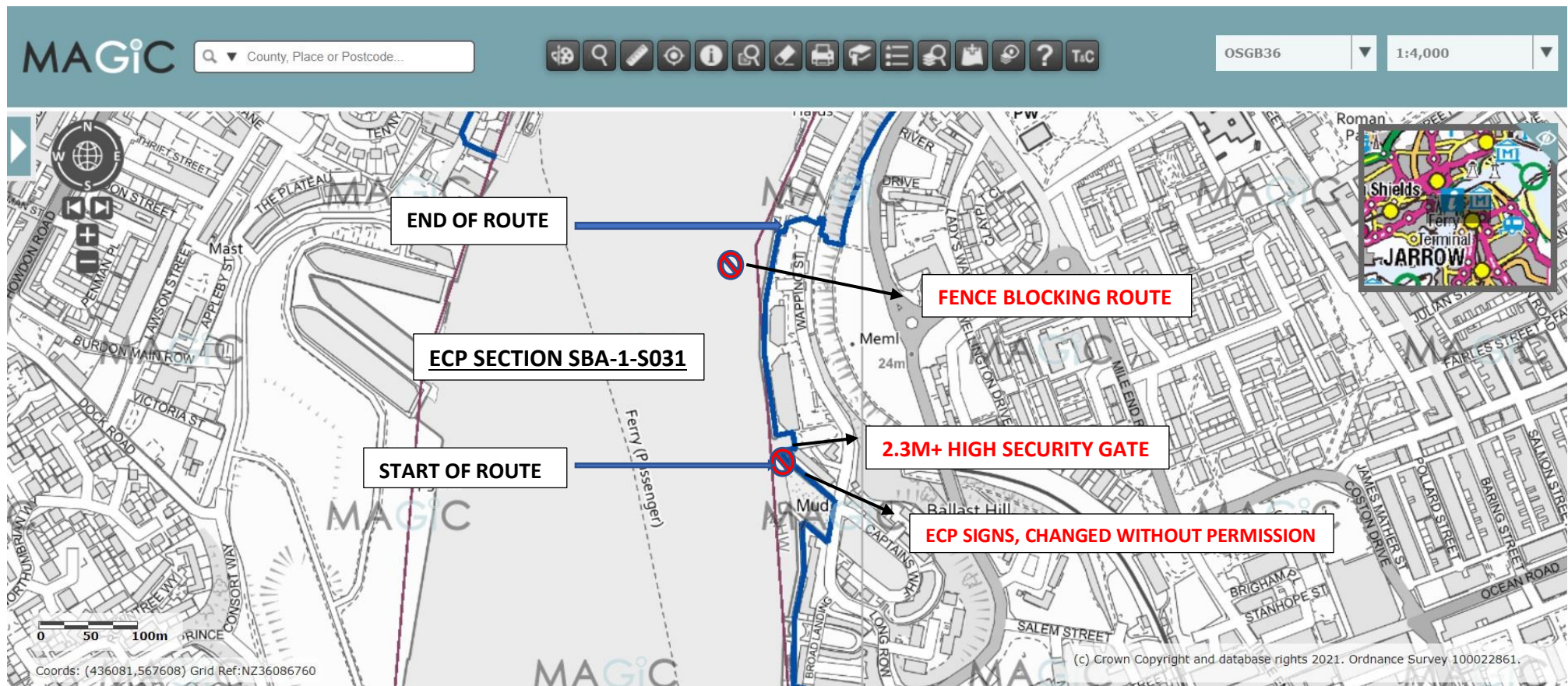


## ITEM 2 A MAP OF THE ROUTE CURRENT OS MAP ENGLAND COAST PATH IN BLUE



The blue route is the England Coast Path (“ECP”) a long-distance national trail which will follow the coastline of England. When complete, it will be 2,795 miles (4,500 kilometres) in length.

A 2.3m+ high security gate and fencing now block public access to part of the route as shown on the map from Long Row to Wapping Street. [Section SBA-1-S031 South Pier to Shields Ferry]

Current OS <https://magic.defra.gov.uk/MagicMap.aspx>