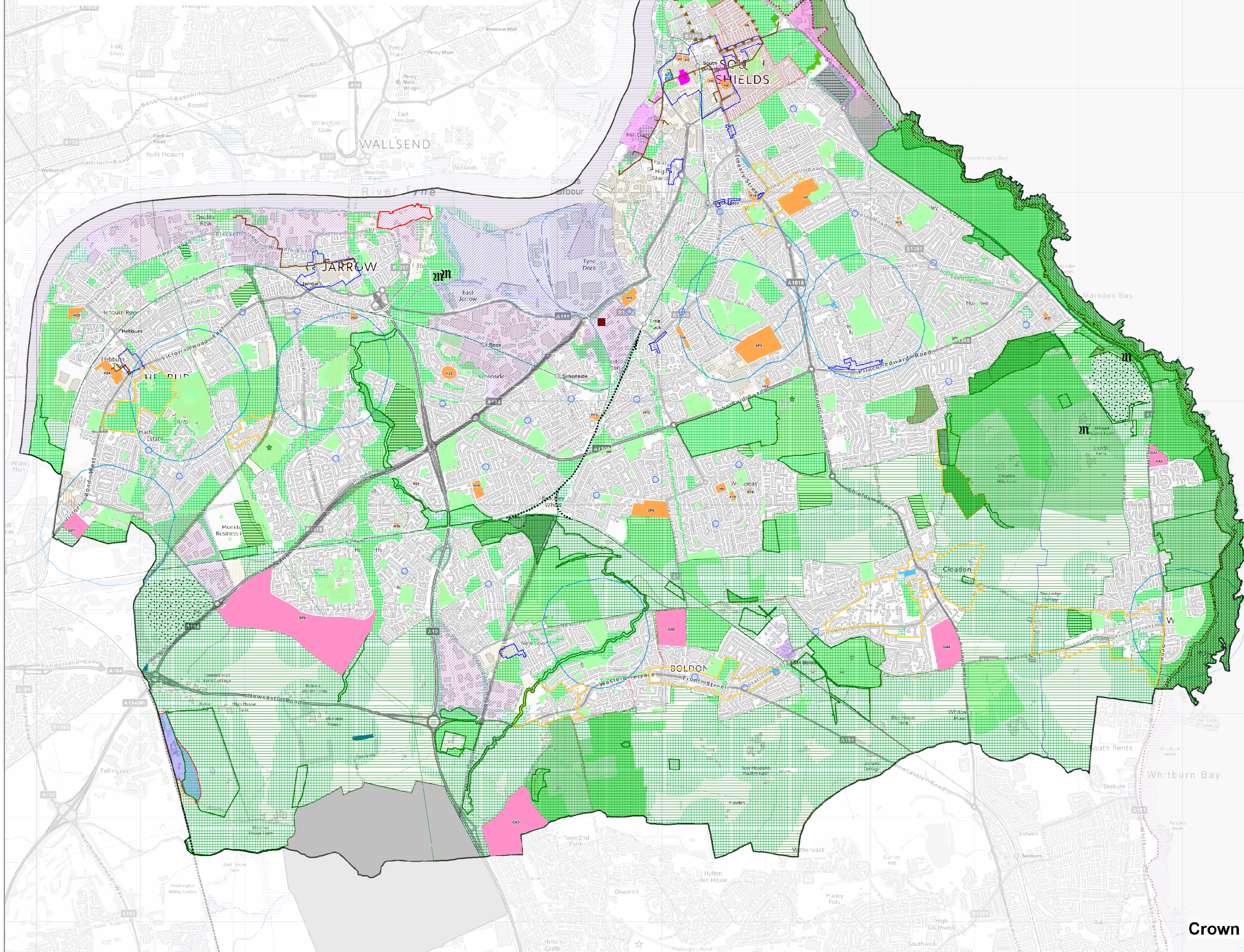




South Tyneside Council

DRAFT Local Plan Policies Map 2023-2040



- South Tyneside County Boundary
 - IAMP AAP Boundary
 - Strategic Allocations**
 - Housing Allocations in the Main Urban Area SP3, SP4, SP5, SP6
 - Urban and Village Growth Areas SP3, SP7, SP8
 - Regeneration Improvement Areas SP3, SP10, SP12, SP13
 - South Shields Town Centre College Regeneration Site SP11
 - Wardley Colliery SP14
 - Meeting the Challenge of Climate Change, Flooding and Coastal Change**
 - Areas potentially suitable for wind energy development Policy 6
 - District Heating Schemes Policy 6
 - Flood Zone 3 Policy 8
 - Flood Zone 2 Policy 8
 - Coastal Change Management Area Policy 12
 - Delivering a Mix of Homes**
 - Whitburn Neighbourhood Planning Area SP16
 - East Boldon Neighbourhood Planning Area SP16
 - Lawe Top Article 4 Direction Policy 16
 - Policy 14 - See Local Plan Inset Map 20
 - Policy 18 - See Local Plan Inset Map 21
 - Gypsy, Travellers and Travelling Showpeople Sites Policy 21
 - Delivering a Strong, Competitive Economy**
 - Employment Land for General Economic Development SP17, SP18, Policy 22
 - Provision of Land for Port and River-Related Development SP17, SP19, Policy 22
 - Cemex Jarrow Aggregates Wharf Policy 24
 - Ensuring the Vitality of Centres**
 - Town and District Centres SP9, SP20, Policy 26, Policy 27, Policy 28
 - Local Centres SP20, Policy 26, Policy 28
 - Neighbourhood Hubs Policy 29
 - South Shields Market Policy 30
 - 400m Buffer Around Secondary Schools Policy 32
 - Protecting and Enhancing the Natural Environment**
 - Sites of Special Scientific Interest, Special Protection Areas and Ramsar Sites Policy 34
 - Special Areas of Conservation Policy 34
 - 7.2km Buffer of Durham Coast SAC and Northumbria Coast SPA Policy 34
 - Local Wildlife Sites Policy 34
 - Local Geodiversity Sites Policy 34
 - Local Nature Reserves Policy 34
 - Wildlife Corridor Policy 34
 - Green and Blue Infrastructure Corridor SP22
 - Designated Open Space Policy 37
 - Key Sporting Hubs SP23
 - Playing Pitch Improvements SP23
 - Areas of High Landscape Value Policy 39
 - Green Belt Boundary Policy 41
 - Conserving and Enhancing the Historic Environment**
 - Arbia World Heritage Site Policy 42
 - Arbia World Heritage Site Setting Policy 42
 - Scheduled Monuments Policy 43
 - Registered Parks and Gardens Policy 43
 - Conservation Areas Policy 43
 - Important Archaeological Sites Policy 44
 - Transport and Infrastructure**
 - Safeguarded Land for New Metro Station Policy 52
 - Safeguarded for Rail Connections Policy 52
 - Waste and Minerals**
 - Waste Facilities Policy 55
 - Minerals Infrastructure Policy 56
- The Airport Exclusion Outer Zone covers the entire Borough Policy 53
The Minerals Safeguarding Area covers the entire Borough Policy 56
- The following policies are relevant to the whole Borough:
SP1, SP2, SP15, SP21, SP24, SP25, SP26
Policies 1, 2, 3, 4, 5, 7, 9, 10, 11, 13, 15, 17, 19, 20, 23, 25, 33, 35, 36, 38, 40, 45, 46, 47, 48, 49, 50, 51, 54, 57, 58, 59, 60