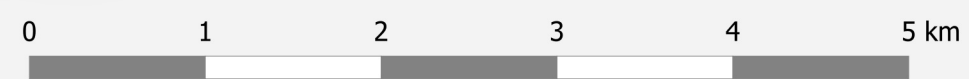
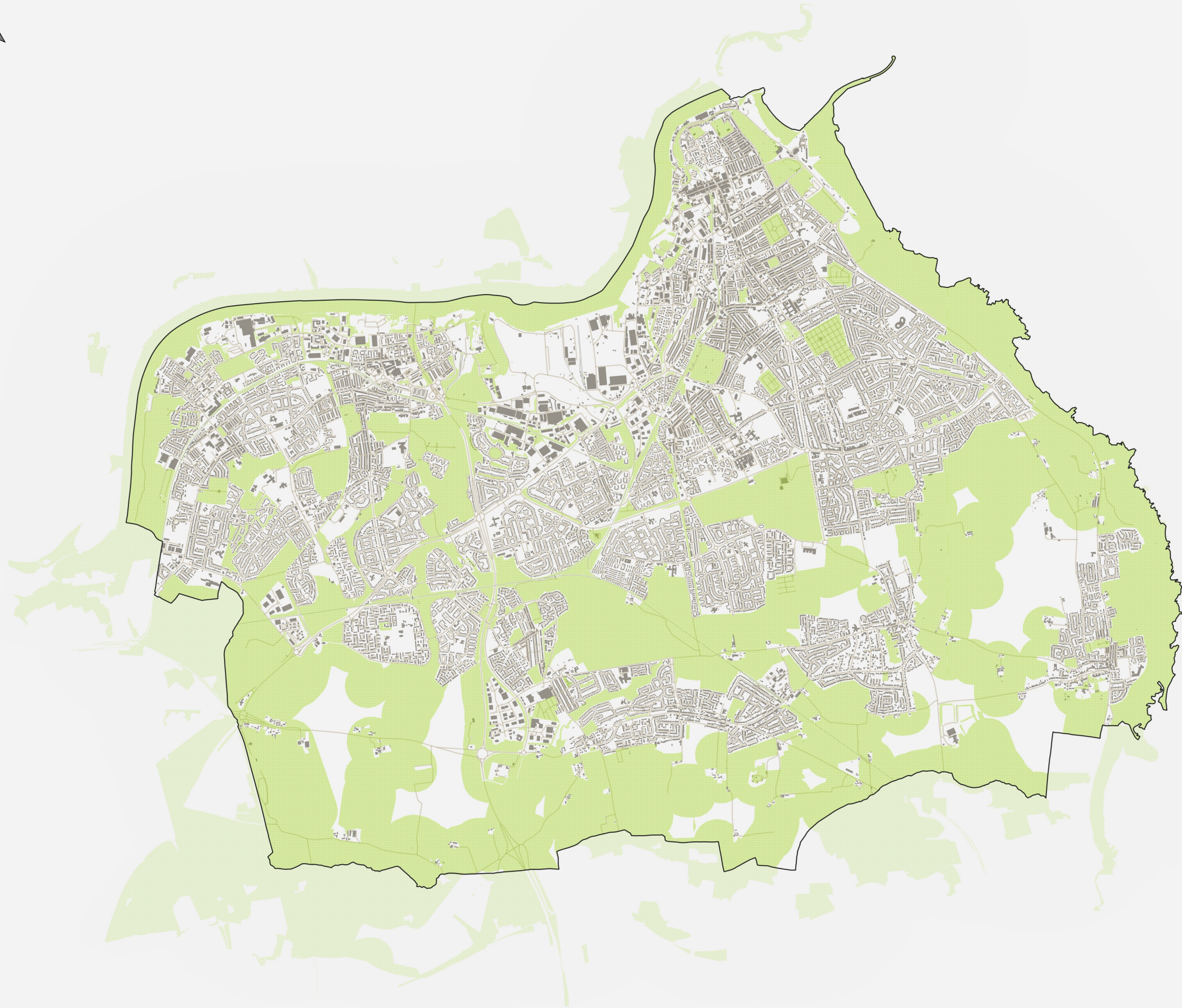




Key

South Tyneside Wildlife Corridors Network



ANNEX B (South Tyneside)



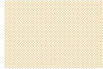
Figure 6.3.1: South Tyneside Wildlife Corridors Network (Core Sites, Secondary Features, Stepping Stones, Buffers)

Date: 11.12.20

| | | |
|-------|-------------------------------|-------|
| BY:LS | DOCUMENT REF: BR0465/LDP/A | REV:A |
|-------|-------------------------------|-------|



Key

-  South Tyneside Core Sites
-  South Tyneside Watercourses (Core Sites)
-  South Tyneside Buffer Zones

BURTON REID
ASSOCIATES

ANNEX B (South Tyneside)

Figure 6.3.2: South Tyneside Wildlife Corridors Network (Core Sites and Buffer Zones)

Date: 11.12.20

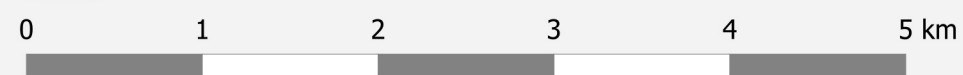
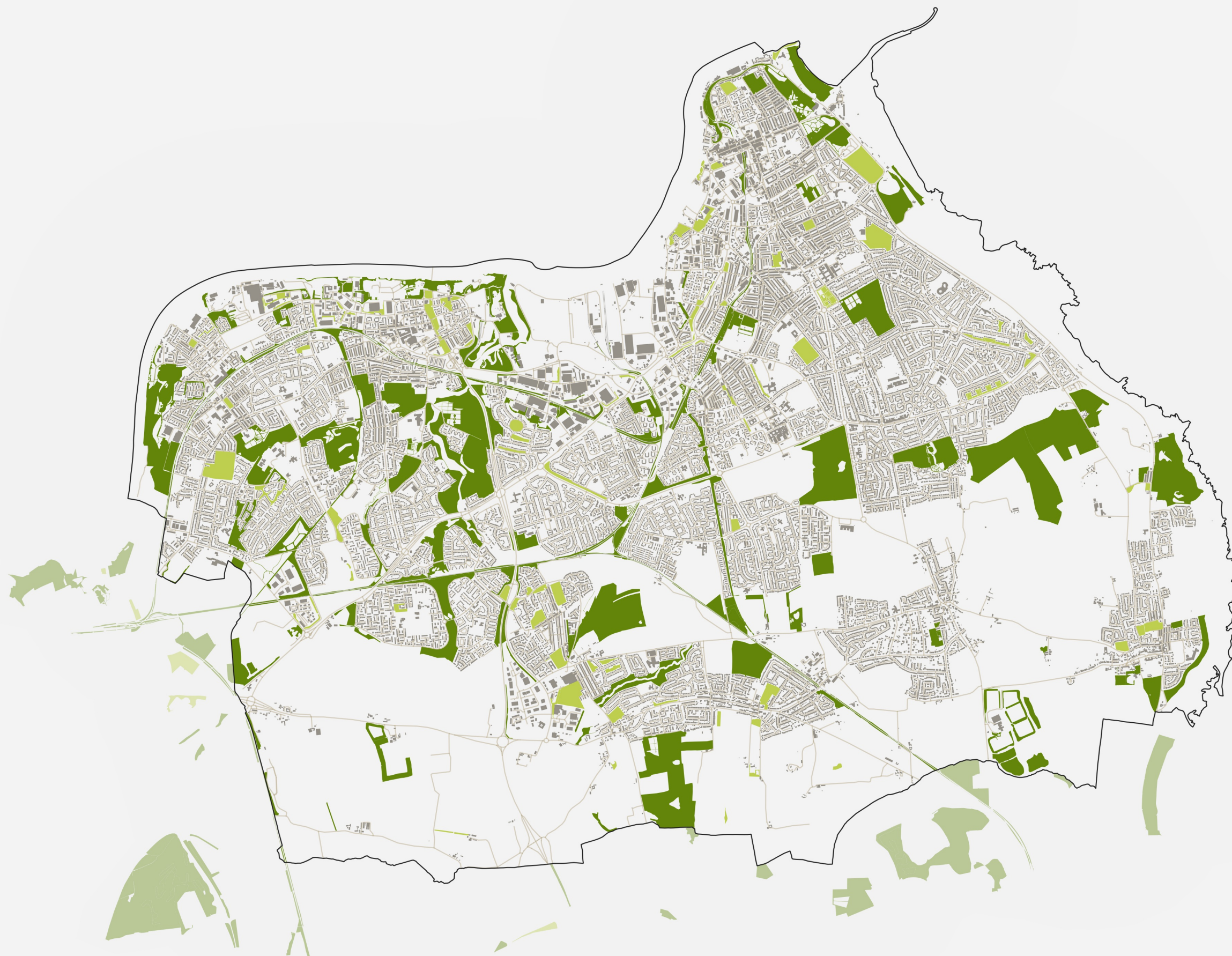


| | | |
|-------|-------------------------------|-------|
| BY:LS | DOCUMENT REF: BR0465/LDP/A | REV:A |
|-------|-------------------------------|-------|



Key

-  South Tyneside Secondary Features
-  South Tyneside Stepping Stones

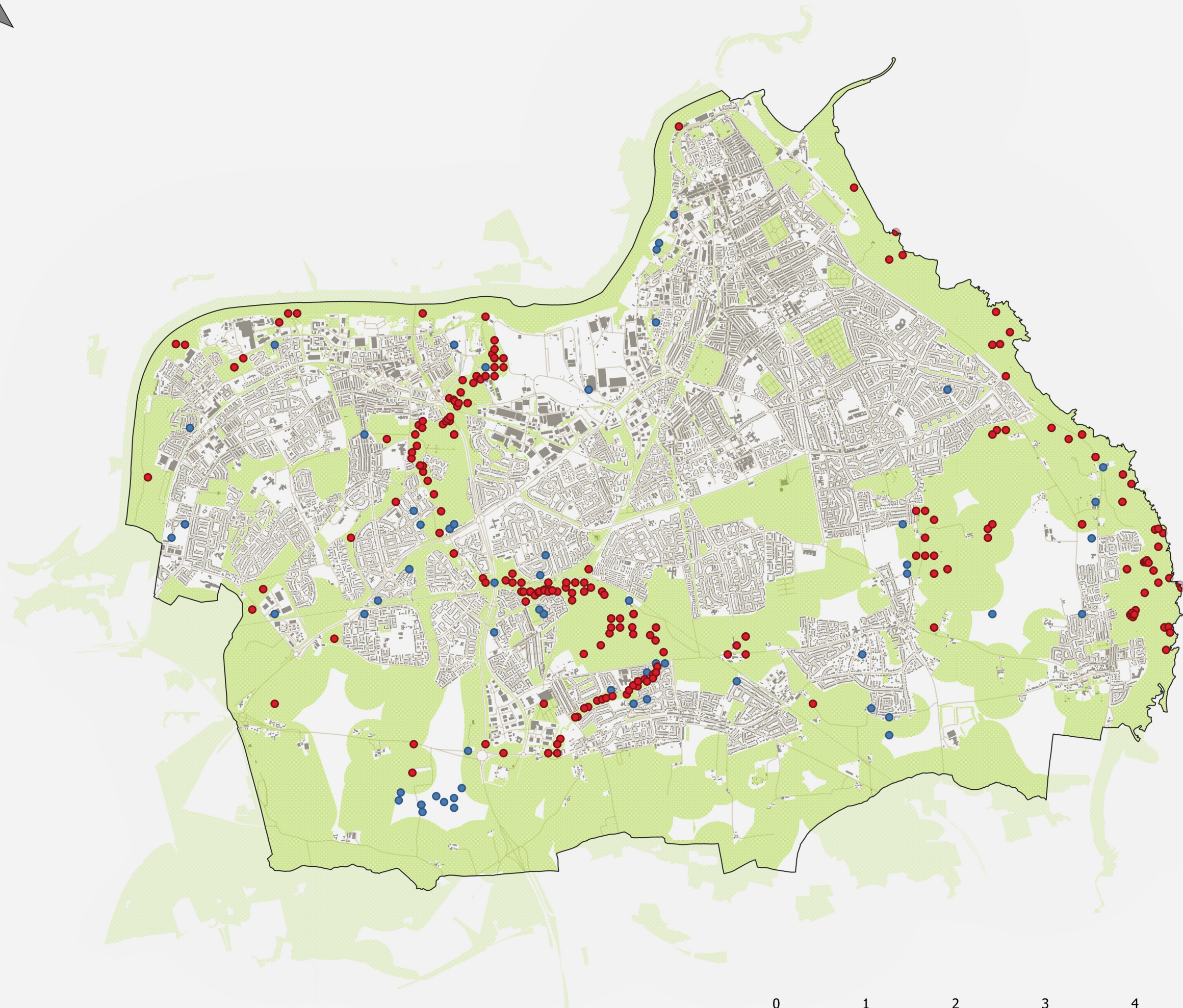


ANNEX B (South Tyneside)

Figure 6.3.3: South Tyneside Wildlife Corridors Network (Secondary Features and Stepping Stones)

Date: 11.12.20

| | | |
|-------|-------------------------------|-------|
| BY:LS | DOCUMENT REF: BR0465/LDP/A | REV:A |
|-------|-------------------------------|-------|



Key

- South Tyneside Key Species within network
- South Tyneside Key Species outside network

Records for Key Species were provided by the Environmental Records Information Centre for the North East of England (ERIC). Of those records 76% approx. fall within the mapped Wildlife Corridor Network.

Please note that this excludes bat records due to bats being highly mobile species that are frequently found to be associated with built development.

BURTON REID
ASSOCIATES

ANNEX B (South Tyneside)

Figure 6.3.4: South Tyneside Wildlife Corridors Network (Key Species)

Date: 11.12.20

| | | |
|-------|-------------------------------|-------|
| BY:LS | DOCUMENT REF: BR0465/LDP/A | REV:A |
|-------|-------------------------------|-------|