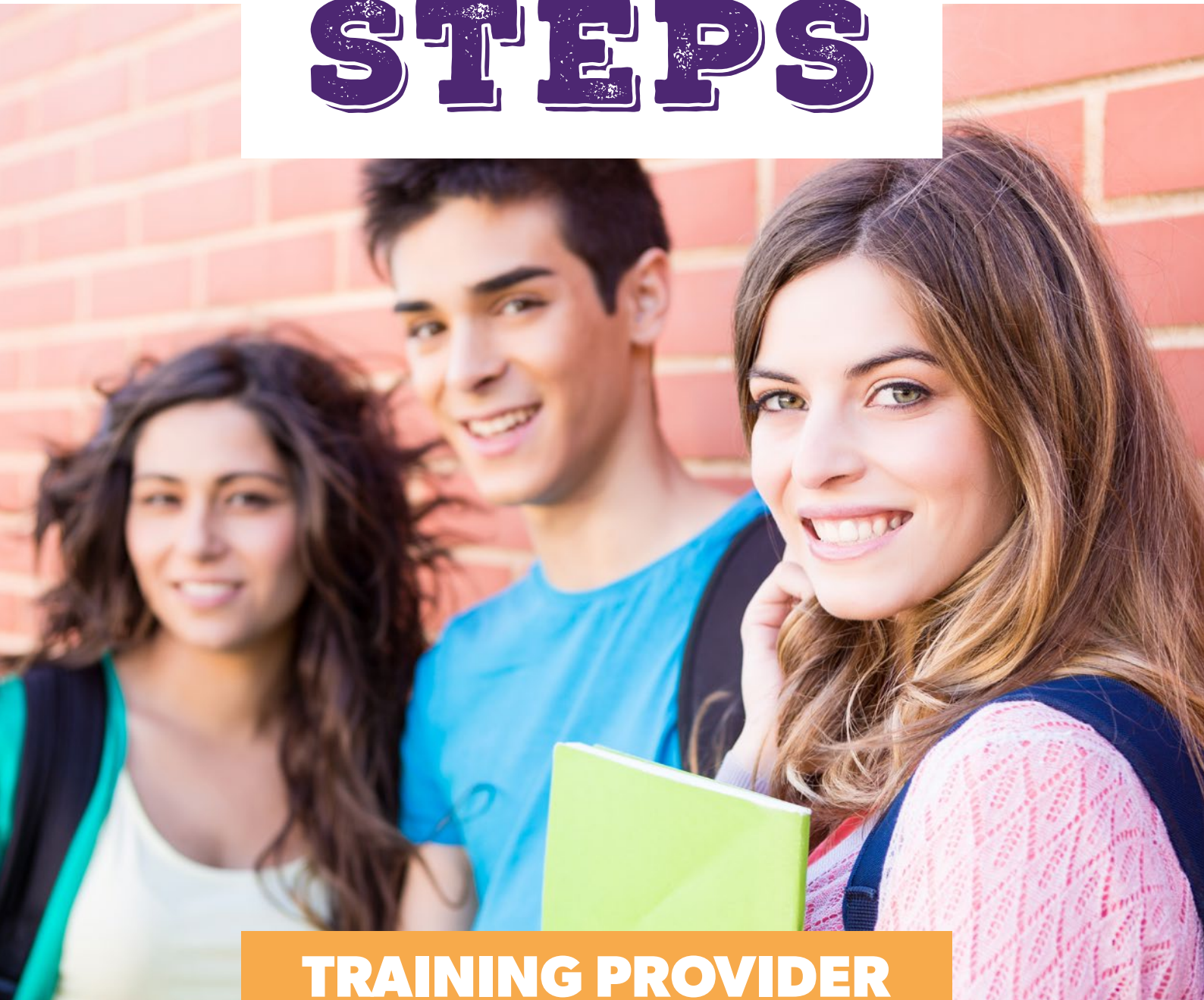


# YOUR NEXT STEPS



## TRAINING PROVIDER PROSPECTUS 2023/24



Many congratulations on completing your secondary education here in South Tyneside, the next step of your journey is an exciting one and one that will set the tone for your future career and adult life.

We understand that you, like many young people across the country, may be feeling nervous about what your next steps look like. Your Next Steps is here to support you with the transition between secondary and further education or training.

In this YNS prospectus, you'll be able to find out more about what local training providers are offering from September as well as find out where to look for information about what local colleges and sixth forms are offering and where to go if you would like to find out more information about apprenticeship vacancies.

You can also keep up to date with the latest news and information about education, employment and training by following Connexions South Tyneside on Facebook, just search **Connexions South Tyneside**.



Use our matrix below to get a brief overview of the type of training you can access through each provider, then head to their overview page to find out more.

	Study Programme	Apprenticeships
Chameleon Vocational Training (CVT)	x	x
Choices College South Tyneside	x	
Epinay Business and Enterprise School	x	
Foundation of Light	x	
Groundwork (Route to Work College)	x	
Keelmans Way School	x	
Key Subject Tuition	x	
Learning Concepts	x	
Lomax Training	x	
MPCT	x	
Phoenix	x	
Princes Trust	x	
Project Choice at Gateshead College	x	
PRS	x	
Resources North East	x	x
SETA	x	x
Springboard	x	x
South Tyneside College	x	x
South Shields Marine School	x	
South Tyneside Works	x	
Training in Care	x	
TRN (Train)	x	x
Zenith		x

While you explore your options, you may not be familiar with some of the language used. We have answered some of those potential questions on the following page.

## What is a Study Programme?

Your study programme is a tailored package of qualifications available to you post-16, it's like an individual learning plan based on your qualifications, what you want to do next, and any career plans you have.

Each person's programme will vary – your training provider will explain how your programme details reflect your individual needs, abilities and ambitions.

You'll spend most of your time studying an academic or vocational qualification. Whether you are studying one or more qualification these will be included in your study programme.

There's a range of activities to support your progression to help you develop personal, study and employability skills.

## What is an Apprenticeship?

Apprenticeships enable you to earn a wage and gain a qualification at the same time.

### When you're an apprentice:

- you get paid and train at the same time, with at least 20% of your time spent in off the job training, often at a college, university or with a training provider
- you train to be fully competent in your chosen occupation
- you're on a career path - with lots of future potential for you
- Your apprenticeship can take between one and six years to complete, depending on which apprenticeship you choose, what level it's at, and your previous experience.

There are hundreds of different apprenticeships to choose from. Whether you're at the start of your career, want to change career direction, or if you're returning to work after a break.

All apprenticeships make sure you're 'job ready' for the role you have trained for.

For more information about apprenticeships and to search for current vacancies, you can visit

[www.gov.uk/apply-apprenticeships](http://www.gov.uk/apply-apprenticeships)

## What is a T Level

A T Level is a nationally recognised qualification for 16-19 year-olds that takes two years to complete. Leading businesses and employers help design T Levels to give you the knowledge and skills you need. They're roughly equal to 3 A Levels.

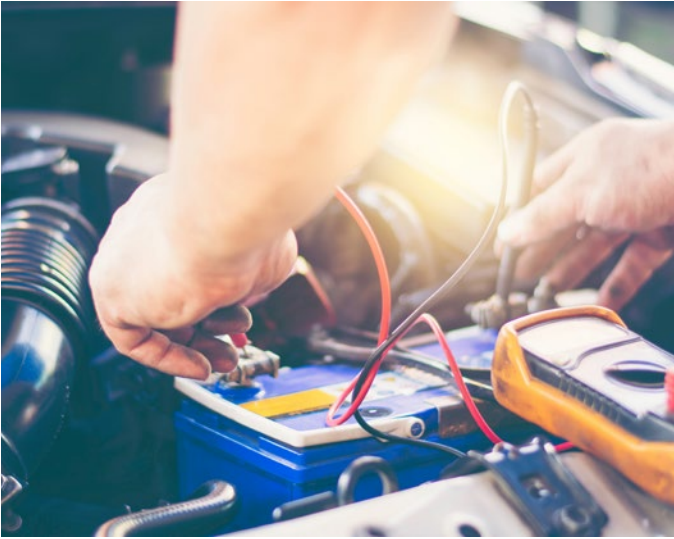
You'll spend 80% of your time in the classroom and 20% on a minimum 9-week placement with an employer. This means you'll learn what a real career is like while you continue your studies.

Schools and colleges set their own entry requirements, so check their websites to find out what GCSE grades you need.

There are several subjects available now in England, including digital, science, construction and health.

Find out more at: [www.tlevels.gov.uk](http://www.tlevels.gov.uk)

**Understanding what employment opportunities are available to you after education is important in helping you decide what route is the best for you.**



# Chameleon Training

## What is on offer:

Chameleon Vocational Training has strong links with automotive industry employers across the North East. Our range of training, qualifications and apprenticeships can increase your employability by equipping you with the skills and knowledge employers within the industry are searching for.

Our automotive study programmes are available at Level 1, 2 and 3 and are delivered over 2 days a week for 36 weeks from our base in Washington – all levels combine a mix of both practical and theoretical teaching to help you progress into an apprenticeship or further training.

We also offer apprenticeship training in both Light Vehicle and Autocare Technician apprenticeships.

Dylan completed a Motor Vehicle Study Programme and went on to progress into an apprenticeship with Sherwood's Garage in Gateshead.


## How to apply

To find out more about Chameleon Training, visit [www.cvt-uk.co.uk](http://www.cvt-uk.co.uk) or call us on 0191 340 6060.

We will then arrange a visit for a tour of our centre and discuss all courses with you on an individual basis to ensure you get the course that is right for you.

### Contact: Shaun Welch

 [shaun.welch@cvt-uk.com](mailto:shaun.welch@cvt-uk.com)

 **0191 3406060**

 [www.cvt-uk.co.uk](http://www.cvt-uk.co.uk)



# Foundation of Light

## What is on offer:

Designed to increase motivation and self-esteem amongst participants, our interactive courses consists of a mixture of classroom, practical and physical activities which all enable participants to enhance their employment prospects.

## On our programme you will:

- Gain nationally recognised qualifications in areas such as:
  - Sport
  - ESports
  - Workskills
  - Personal Development
  - Maths
  - English

- Get help with CV writing, job seeking, interview techniques and application support tailored to your needs
- Real job opportunities matched to your skills and experience

We also offer a traineeship in Sport & Leisure which where you will complete Sport and Work Skills as the core aims and will receive a work placement. Support is also available if you need help with your English and maths knowledge.



**FOUNDATION  
OF LIGHT**

## How to apply

Before enrolling, participants will be able to tour the facility and meet their tutors. Tutors will provide details of the programme, qualifications on offer and opportunities for work placements, course activities and progressions after course completion. Participants will be able to see the World of Work Zones at the Beacon of Light, including how these can be used to support practical employability experience through their course.

### Contact: Neil Jones

✉ [Neil.Jones@foundationoflight.co.uk](mailto:Neil.Jones@foundationoflight.co.uk)

☎ **0191 563 4777**

➔ [www.foundationoflight.co.uk](http://www.foundationoflight.co.uk)



# Key Subject Tuition

## What is on offer:

From our classrooms at Cookson House in South Shields, we offer face-to-face learning on our 3-day Study Programme over 16 hours a week for 15 weeks.

## Our Study Programme comprises of:

- 2x 3-hour sessions of Diploma in Skills for Employment, Training and Personal Development (Level 1 and Level 2);
- 1x 3-hour session of Functional Skills English (Entry Level 1-Level 2);
- 1x 3-hour session of Functional Skills Maths (Entry Level 1-Level 2); Tutorial focusing on personal development;
- 1x 2-hour session of Enrichment involving outdoor activities.

## Our learners say:

**“They always focus on Maths and English and if anyone has a problem, they are always there.”**

**“It helps my dyslexia by providing colour pages, the tutors help sort things out personally, make it easy for me to learn” .**



## How to apply

Get in touch and we will arrange an informal meeting to visit the centre, meet the staff and discuss our study programme.

You can then complete our enrolment documentation if you wish to study with us.

We have three intakes throughout the year in September, January and April.

## Contact: Claire Wardle

✉ [info@keysubjecttuition.co.uk](mailto:info@keysubjecttuition.co.uk)

☎ 07788 126846





# Lomax Training

## What is on offer:

Lomax Training delivers a wide range of courses from its purpose-built centres within the North East. For school leavers, we offer a Level 1 Diploma in Plumbing course to enable you to gain the skills needed to enter the plumbing and heating industry.

You will study plumbing alongside Maths, English and employability skills in key topics such as CV building, interview techniques, budgeting and interpersonal skills. You will study at Lomax Training, Howdon, Wallsend for 3 days per week for 6 months.

We have excellent employer links working with a wide range of companies to give our learners the opportunity to progress onto a gas apprenticeship or the plumbing level 2 qualification.

## How to apply

Call, email or apply online: [www.lomaxtraining.co.uk/apply-for-course-funding](http://www.lomaxtraining.co.uk/apply-for-course-funding)

Our support services team will be in touch to arrange an information, advice and guidance session to discuss course, progression routes and an opportunity for you to ask any questions you may have about the course.

**Contact: Charlotte McKinnie**

✉ [charlottemckinnie@lomaxtraining.co.uk](mailto:charlottemckinnie@lomaxtraining.co.uk)

☎ **0191 262 3040**



# Military Preparation College

## What is on offer:

Our course are designed to give learners the skills needed to start their journey towards a rewarding career in the British Armed Forces or to progress on to further education or training.

At the college, you will follow a weekly routine of activities and learning. This includes vocational training, physical training, English and Maths, military training days and assessments. Our curriculum covers a wide variety of skills development, including public speaking. The skills and confidence needed are gained through practice of preparing and delivering icebreakers and presentations. Learners will always have the support of their peers and their instructor every step of the way.


Problem-solving and leadership skills are essential in the Armed Forces and civilian employment. You will take part in a range of problem-solving activities both in the field, and in academic lessons. The ability to work effectively as a team member will be essential to your success. There are many leadership opportunities at the college, and we encourage all learners to challenge themselves to be more than average.

## How to apply

Recruitment process is very simple, just click apply now at the top of our website and a member of our learner support team will get in contact to talk through the enrolment process. You could be enrolled and joining in with your new college in a matter of days.

### Contact: Nathan Devlin

 [Nathan.devlin@learningcurvegroup.co.uk](mailto:Nathan.devlin@learningcurvegroup.co.uk)

 **07534 704937**

 <https://mpct.co.uk/military-preparation-college/apply-now/>



# Phoenix Employment Training Academy

## What is on offer:

With Phoenix, you'll have the opportunity to complete a Warehousing and Logistics Study Programme that will give you the skills needed to succeed in the sector. You'll also be given the opportunity to complete Fork Lift Truck training alongside employability skills – if you need support with your English and maths, it'll also be embedded into your programme.

## How to apply

Before enrolling, participants will be able to tour the training centre and meet the tutors. We will provide details of the programme, qualifications on offer and progressions after course completion.

### Contact: Robert Dent

✉ [admin@petaltraining.com](mailto:admin@petaltraining.com)

☎ 0191 510 8812

# Princes Trust

## What is on offer:

We offer a variety of employability and confidence programmes for 16-30 year olds who are out of education, employment and training:

Our **Explore** programme is individually tailored to meet your needs at a pace that is suitable for you – you'll take part in group activities including one-to-one support to develop your confidence and skills as you work towards your goals.

You could then progress onto our 12-week full time **TEAM** personal development programme. Boost your confidence and take part in employability sessions. Develop skills in teamwork and community action by engaging on a work-based placement and opportunity to attend a residential to take part in adventurous activities

If you want to develop your vocational skills our **Get Started** programmes offer short courses to help you develop your skills through practical activities, giving you the confidence and motivation to move forward with your life.

We also run a range of **Get Into** programmes throughout the year which are delivered with employers like M&S and Greene King. These 2-4 week programmes give you an insight into the world of work and give you direct work experience within an industry.

Finally, our 1 week **Employ Me** programme is designed to build you confidence and communication skills and is a mixture of self-directed learning and online group sessions. Support with CV writing; cover letters and online job applications, customer service skills workshops, interview technique and mock interview sessions.



## How to apply

Send an email to [princestrustne@princes-trust.org.uk](mailto:princestrustne@princes-trust.org.uk) with your name and contact number and a brief outline of what support you are looking for and one of the local team will call you back. Alternatively, you can speak to an advisor through the Live Chat option on the Prince's Trust webpage.

### Contact: John Atkinson

✉ [princestrustne@princes-trust.org.uk](mailto:princestrustne@princes-trust.org.uk)

☎ 0800 842842

➔ [www.princes-trust.org.uk](http://www.princes-trust.org.uk)



# PRS

## What is on offer:

PRS aims to support people with a disability, and those who have multiple barriers to employment, education, training and community engagement to make confident life decisions, and pursue their own learning and development with quality choices and our programme offer has been carefully considered and developed with this in mind.

We offer a tailored package of Employability Skills, Study Skills including Maths, English, IT, Work Experience and Vocational Specific Qualifications. Duration will be a minimum of 16 hours per week for around 36 weeks.

Delivered locally by dedicated tutors, learning support and job coaches with established pathways in the following areas:


- Health and Social Care
- Hospitality and catering
- Hair and Beauty
- Customer Service and Business Admin
- Retail

## How to apply

Contact one of our friendly team members on **0191 7318893** to discuss our offer and how best we can support your education and/or training needs. Alternatively please email **admin@prsinclusion.com** and one of the team will get back to you

**Contact: Ashleigh Fontaine**

 **admin@prsinclusion.com**

 **0191 731 8893**



# Resources North East

## What is on offer:

With over 150 progressions into apprenticeships each year from our study programme and traineeships, our programmes are the perfect start to your career. Our study programmes, which are delivered over 30 hours per week up to 20 weeks cover:

**Painting and Decorating** – You'll develop the basic skills needed to be a painter and decorator including decorative finishes, cutting in and rolling paint.

**Bricklaying** – You'll learn how to install cavity walling, straight brickwork skills, use of tools, time management and critical health and safety requirements needed in the role.

**Joinery** – You'll begin to understand basic joints, installation of door frames, door hinges and locks. You'll complete a work-based project to further develop the skills employers demand of you including fitting of kitchen units and counter tops.

**Hairdressing and Beauty Therapy** - The Hair and Beauty sector provides services to people across all walks of life. If you enjoy talking to people and helping them look and feel great then perhaps a career in Hair, Beauty or Barbering could be for you. You can explore courses in Hairdressing, Barbering and Beauty.

## How to apply

For more information head to [www.resourcesnortheast.co.uk](http://www.resourcesnortheast.co.uk) and complete the referral form, alternatively give us a call or ask your Connexions Advisor to arrange a call back.

### Contact: Tracy Rutherford

✉ [tracy.rutherford@resourcesdev.co.uk](mailto:tracy.rutherford@resourcesdev.co.uk)

☎ 0191 483 7002

➔ [www.resourcesnortheast.co.uk](http://www.resourcesnortheast.co.uk)

# SETA

## What is on offer:

We deliver industry recognised training to help you provide a launchpad for careers in engineering, manufacturing and related industries.

Our apprenticeships span a variety of sectors and career pathways including:

**Engineering** - A paid apprenticeship with a company for 42 months consisting of foundation training at Seta for 6 – 9 months depending on the technical area you're looking to develop. This course has three main components with 37 hours a working week, starting at 8 – 4 Monday till Thursday and 8 – 1 on a Friday. This will take place at both Seta and the employers' workplace.

Our **Business Administration, Production and Warehousing** apprenticeships take place over 18 months within a local company within the relevant sectors with learning taking place within the workplace – all apprenticeships will be completed over a 37-hour working week.



## How to apply

Apply online at  
[www.seta.co.uk/apprentice/apprentice\\_form](http://www.seta.co.uk/apprentice/apprentice_form)



**Contact: Nathan Lyle**

✉ [enquiries@seta.co.uk](mailto:enquiries@seta.co.uk)

☎ **0191 416 2860**

➔ [www.seta.co.uk](http://www.seta.co.uk)



# Springboard

## What is on offer:

Our study programmes are available in a variety of vocational specialisms that will help you progress into further training or employment in the sector you choose.

Each of our full time study programmes are approximately 16 hours per week and vary in level from Level 1-3 which are either delivered in Jarrow or Sunderland, it also includes English and Maths up to GCSE.

## You can choose a vocational specialism in the following:

- Animal Care
- Beauty Therapy
- Childcare

- Construction
- Hairdressing
- Health and Social Care
- Horticulture
- Hospitality and Catering
- Vehicle Maintenance

## We also offer a range of apprenticeships in the following sectors:

- Business Administration
- Customer Service
- Childcare
- Health and Social Care
- Retail

## How to apply

Contact Springboard via our phone line **0300 003 7073** or via Facebook (SpringboardNE) or website [www.springboard-ne.org.uk](http://www.springboard-ne.org.uk) and complete a contact form.

### Contact: Gail Steadman

 [contact@springboard-ne.org](mailto:contact@springboard-ne.org)

 **0300 003 7073**

 [www.springboard-ne.org.uk](http://www.springboard-ne.org.uk)



# South Tyneside College

## What is on offer:

We offer a huge range of vocational courses and apprenticeships, so you can really find your future at South Tyneside College. With a range of vocational areas including engineering, sport, creative media and forensic science, we're sure there'll be a course or apprenticeship for you. With strong employer links, you'll be exposed to the workplace and develop an understanding of the skills employers are looking for when recruiting. Some of those employers include, NHS, Leibherr, Mercedes Newcastle & Sunderland, Washington Metal Works and Cleadon Academy.

It doesn't matter if you've decided to study a vocational course or an apprenticeship; you will need to take English and maths qualifications with you. Employers look out for them, so you need them – they are a must on your CV.

That is why we include GCSE maths and English, or a recognised functional qualification, with every course and programme we offer.

To view the full offer available to school leavers, head to [stc.ac.uk](http://stc.ac.uk)



## How to apply

Browse all of our courses online at [stc.ac.uk](http://stc.ac.uk). Once you've found the right one for you, just click "Apply Online" Depending on the course you've applied for, our Student Services Team may arrange an informal telephone interview with the course tutor. Don't worry, any interviews will be very informal and are an opportunity for you to ask any questions you may have about the course.

### Contact:

✉ [sl@tynecoast.ac.uk](mailto:sl@tynecoast.ac.uk)

☎ **0191 427 3900**

➡ [www.stc.ac.uk](http://www.stc.ac.uk)

# South Shields Marine School

South Shields Marine School has specialised in world-class maritime education and training since 1861. We have transformed the delivery of education in this industry with our state-of-the-art facilities, industry expert lecturers and specialist programmes.

Our one year Pre-Cadetship programme covers both navigation and engineering, allowing you to experience what a maritime career is really like in both disciplines. Once completed, you will have the opportunity to progress on to a funded sponsorship with a shipping company, where you'll be able to travel the world while being paid for it! In a world that is ever changing, a career at sea provides fantastic opportunities in an exciting sector where no two days are the same.

As recent Queen's Award winners, you can be rest assured your future is in safe hands. Not only will you learn key skills, make friends and build your confidence, you will have the opportunity to navigate and steer a ship in our multi-million-pound Simulation Centre, manage critical controls in our engine rooms and get a real feel for what a career at sea is all about.

## Entry Requirements

### Level 2 Pre-Cadetship Engineering (Vocational)

- 4 GCSEs Grade 3/D (including Maths, English and a science)

### Level 3 Pre-Cadetship Engineering (Academic)

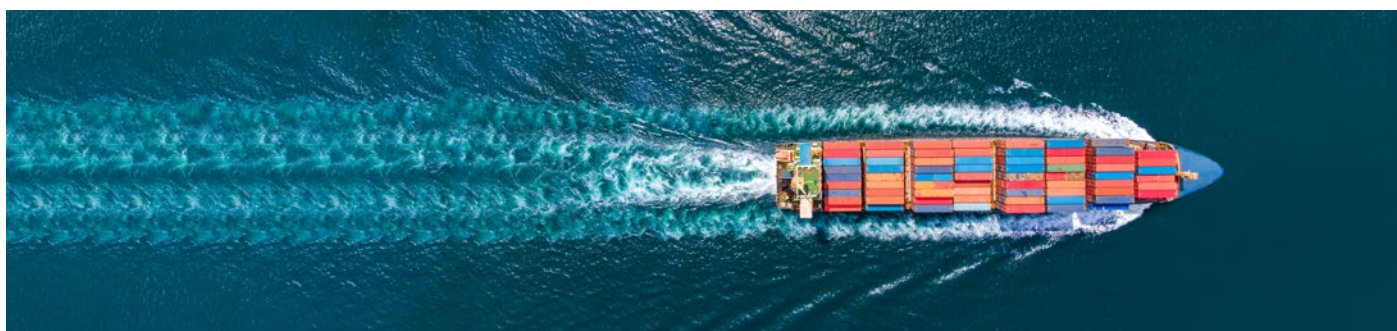
- Level 2 Pre-Cadetship (Level 2 Diploma in Engineering) or 4 GCSEs grades 4 or above (including Maths, English and a Science)

### Level 3 Pre-Cadetship Deck (Vocational and Academic)

- 4 GCSEs Grade 4/C (including Maths, English and a science)
  - You will also be given the opportunity to resit English and Maths alongside your studies.

We have two intakes throughout the year in January and September and all applications will be considered on an individual basis.

Get in touch with our team below.



## How to apply

To submit an application, please visit our website [www.stc.ac.uk/marine](http://www.stc.ac.uk/marine) or email [shipping@stc.ac.uk](mailto:shipping@stc.ac.uk)

If you require further information or a more in depth one-to-one discussion, please get in touch with our Marine Department by email or telephone

### Contact:

✉ [Shipping@stc.ac.uk](mailto:Shipping@stc.ac.uk)

☎ **0191 427 3517**

➔ [www.stc.ac.uk/marine](http://www.stc.ac.uk/marine)



# South Tyneside Works

## What is on offer:

South Tyneside Works' Supporting Teaching and Learning Study programme is preparing the next generation of Teaching Assistants.

The 9-month Study programme will consist of a mixture of taught sessions in the centre and direct experience in the classroom through placements. Delivery will take place at South Shields Business Works and placements will be sourced locally.

You will attend (up to) 4 days per week from 9:30 to 3 and complete a L2 Teaching Assistant qualification alongside English and Maths functional skills if needed. Employability skills will be embedded throughout the programme, and you will have the opportunity to complete a qualification in Special Educational Needs.

You will complete a placement in a local education setting to support you to build your skills and gain direct experience in the classroom.

Once you have completed this study programme, you can progress into employment, an apprenticeship such as L3 Teaching Assistant or on to higher education.

**South Tyneside**  
**WORKS**  
Unlock your potential

## How to apply

If you have any questions about the course content or would like any additional information, please contact Lindsay Usher

**Contact: Lindsay Usher**

✉ [Lindsay.Usher@southtyneside.gov.uk](mailto:Lindsay.Usher@southtyneside.gov.uk)

[southtynesideworks@southtyneside.gov.uk](mailto:southtynesideworks@southtyneside.gov.uk)

☎ **0800 073 1772**



# Training in Care



## What is on offer:

Training in Care has National Academy status in the Child and Adult care sector.

We work closely with employers to enable students into work, and offer a full Skills Bank of over 30 Endorsed and Accredited courses. Our Skills Bank responds to the needs identified by employers, the health and care sectors, and link directly into occupational standards. The duration of our study programme is set to accommodate your need and qualification type. Delivery is 16+ hours per week over 6-12 months, consisting of classroom and work placements within the sector.

## Study Programmes:

The aim of our study programme is to help you achieve a clear understanding of the choice and opportunities for work within both the Child and Adult Care sectors. Once we have discussed your interests and career goals, you will be offered a place on one of the following programmes:

- Level 1 Study Programme in Child and Adult Care
- Level 2 Certificate for Children and Young People's Workforce Study Programme
- Level 2 Diploma in Care Study programme
- Level 3 Diploma for the Children and Young People's Workforce Study Programme
- Level 3 Diploma in Care Study Programme

Our learners typically progress on to apprenticeships, higher education in nursing and teaching, and into employment.

## How to apply

Once you've contacted us, you will be invited to attend an interview to discuss your career aspiration and which course would be suitable for you. You will complete an initial assessment and are then placed upon a pathway to a career in the Care Sector depending on your current ability and future career choice. Bursaries may be available.

### Contact: Lynne Sparkes

✉ [lynnesparkes@trainingincare.co.uk](mailto:lynnesparkes@trainingincare.co.uk)

☎ **0191 5373529**

➡ [www.trainingincare.co.uk](http://www.trainingincare.co.uk)



# TRN

## What is on offer:

With TRN you can undertake apprenticeships and traineeships that will help you develop skills that will lead you into employment.

We offer the following apprenticeships:

- Adult Care Worker Level 2 Apprenticeship
- Lead Adult Care Worker Level 3 Apprenticeship
- Early Years Educator Level 3 Apprenticeship

Additionally your study programme will include; CV writing, interview preparation, job search, self-discipline and interpersonal skills.

Help with English and Maths and ongoing support if you don't have GCSEs A\*-C Grade.

## We also offer the following traineeships:

- Level 2 Traineeship Programme in Adult Social Care
- Level 2 Certificate in Principles of Customer Service Traineeship programme
- Level 1 Certificate in Construction Skills (Bricklaying)
- Level 1 Award in Health & Safety in a Construction Environment qualification Traineeship programme.

For more information about each programme, please visit: [www.trainltd.org](http://www.trainltd.org)

## How to apply

Once you've completed your online initial assessment and TRN application form, you'll be invited for an interview with one of our Employment and Skills Coaches; at this point we'll also discuss work experience placements and course suitability.

### Contact: Richard Whiteley

✉ [richard.whiteley@trainltd.org](mailto:richard.whiteley@trainltd.org)

☎ **0191 477 0840**

➡ [www.trainltd.org](http://www.trainltd.org)



# zenithtraining\*

## What is on offer:

Zenith Training are experts at supporting young people into high quality apprenticeships. We work with organisations right across the North East who have vacancies in the following areas:

- Business Administration
- Customer Service
- Manufacturing Operative
- Hospitality


Zenith Training's apprenticeship recruitment provides young people with free resources, advice and guidance. Designed with input from young people, service offers practical tools to support young people through education, transition into employment as a process of lifelong learning.

## How to apply

To organise a time to chat through your options and which route may be best for you, please contact Georgia Callander.

**Contact: Georgia Callander**

 **[GeorgiaCallander@zenithtraining.org.uk](mailto:GeorgiaCallander@zenithtraining.org.uk)**

 **0191 427 4662**



Alongside vocational training providers, you can also find out more about local colleges and sixth forms – head to their websites to find out more about their offer.

Newcastle College  
[www.ncl-coll.ac.uk](http://www.ncl-coll.ac.uk)

Gateshead College  
[www.gateshead.ac.uk](http://www.gateshead.ac.uk)

Sunderland College  
[www.sunderlandcollege.ac.uk](http://www.sunderlandcollege.ac.uk)

Tyne Met College  
[www.tynemet.ac.uk](http://www.tynemet.ac.uk)

St Joseph's Catholic Academy  
[www.stjosephs.uk.net](http://www.stjosephs.uk.net)

St Wilfrid's RC College  
[www.st-wilfrids.org](http://www.st-wilfrids.org)

Harton Academy  
[www.harton-tc.co.uk](http://www.harton-tc.co.uk)

Whitburn Academy  
[www.whitburncofeacademy.org](http://www.whitburncofeacademy.org)

St Robert of Newminster  
[www.strobertofnewminster.co.uk](http://www.strobertofnewminster.co.uk)

St Aidan's Catholic Boys Academy  
[www.staidanscatholicacademy.co.uk](http://www.staidanscatholicacademy.co.uk)

St Anthony's Catholic Girls Academy  
[www.st-anthonys-academy.com](http://www.st-anthonys-academy.com)

Gateshead Learning & Skills  
[www.mylearningskills.co.uk](http://www.mylearningskills.co.uk)



# Support for Send

There is specialist provision within South Tyneside for young people who have a Special Educational Need and have an Education Health and Care Plan (EHCP)

Information about this provision can be found in this section – your Connexions Advisor will be able to support you with understanding and exploring this provision and help you with making an informed decision about what type of course or placement may be best for you and your long term aspirations.

**PLEASE NOTE;** decisions regarding admission to SEND provision that requires high needs funding such as study programmes, sixth forms and specialist college provision are made by a multi-agency panel. The Post-16 Panel considers your needs, aspirations, progression and outcomes as identified within your EHCP annual review to decide whether a placement is appropriate.



**SEND**  
LOCAL OFFER

You may also wish to have a look at the South Tyneside SEND Local Offer website: The SEND Local Offer website has information about the support and services available in South Tyneside.

It is designed to help you find the best support for children and young people aged 0 to 25 who have Special Education Needs and Disabilities (SEND).

You can take a look at:

[www.sendlocaloffer.southtyneside.gov.uk](http://www.sendlocaloffer.southtyneside.gov.uk)

Over the next few pages, find out more about what is on offer here in South Tyneside to support your skills, independence and knowledge.



# Choices College South Tyneside

NHSE Choice College is a national Specialist Post-16 College providing a person-centred, individually-tailored Supported Internship to young adults with learning difficulties, disabilities and/or Autism. Through the Internship, 16-24 year olds gain work experience, develop independence skills and increase their employability.

Our service is bespoke, offering tailored support to each Intern, and employment opportunities are matched to the individual's skills. We will empower our Interns and build their confidence as individuals in the workplace, while also offering life experience beyond their home and school environments.

The Internship is for 16-24 year olds with SEND needs such as learning difficulties, learning disabilities and autism. There are no academic requirements to join the Internship, however individuals will need to have an aspiration to work and a current Education, Health and Care Plan (EHCP) in place.



## What kind of work experience roles are available to Interns?

Choice College Supported Internship is delivered within NHS organisations, the independent sector and private business. Interns have provided valuable assistance in a huge variety of roles, including:

- Care
- Pharmacy
- Clinical Coding
- Human Resources
- Information Services
- Education
- Grounds Maintenance
- Receptions
- Domestic Services
- Catering
- Post Room
- Central Stores

## What does a typical week look like for an Intern?

Interns spend four days per week in work, with one day in the classroom. In the classroom, Interns learn about employment and develop employability skills, as well as having study time to improve Maths and English. All of the education is delivered by our in house functional skills team, learning support assistant and college staff.

## How to apply

For more information please visit our website.

**Contact: Emily Childerstone**

➤ [www.hee.nhs.uk/our-work/project-choice-supported-internships](http://www.hee.nhs.uk/our-work/project-choice-supported-internships)



# Epinay Business and Enterprise School

## What is on offer:

Our 16-19 Study programme is designed to equip you with the skills and knowledge to give you the best start in your career and adult life.

The study programme curriculum is designed to celebrate success for all students. You will have a 4 day week bespoke timetable which will include two days placement/work experience. Your learning will begin in September and will finish on the last Friday in June.

Prior to starting your study programme, our Key Stage 5 Leads will meet with you and your parents/carers and put in place a personalised programme that meets your needs. We'll explore vocational pathways of study including:

- Catering
- Business Administration/Customer Service
- Sport and Leisure
- Horticulture
- Hairdressing
- Animal Care
- Mechanics
- Skills for Employment, Training and Personal Development.

## How to apply

For more information please visit our website.

**Contact: Sandra Stephenson**

 [www.epinay.org/6th-form-prospectus](http://www.epinay.org/6th-form-prospectus)

 [sstephenson5@epinay.org](mailto:sstephenson5@epinay.org)



# Keelman's Way School

## What is on offer:

We provide relevant and stimulating experiences to support your progress and personal development. Our Post-16 offer is based at our school site in Hebburn and we offer bespoke programmes and courses of study to suit your individual needs.

At Keelman's Way we understand that each student is an individual. We pride ourselves on supporting each student with the best possible learning and medical support available. All students have access to a Public Health Nurse, Medicine and Inclusion officer (School Based), Community Nursing team (Where required), Physiotherapy, Occupational Therapy, Speech and Language Therapy Team, Educational Psychologist and Social Work Team (Children's & Adults).

Our Like Skills Curriculum is developed to build your independence and prepare you for adulthood, building on things like managing your money, cooking, travel training and social and employability skills.

You will be given the opportunity to undertake a work placement through our Future Routes Internship Programmes as well as the choice to do a Duke of Edinburgh Award.

## How to apply

Please contact us by either email or phone. Further details can be found on our website.

### Contact: Mrs V Scott

✉ [vscott@keelamsnwayschool.co.uk](mailto:vscott@keelamsnwayschool.co.uk)

☎ 0191 489 7480

➔ [www.keelmanswayschool.co.uk](http://www.keelmanswayschool.co.uk)

# Groundwork South and North Tyneside - Route2Work College

## What is on offer:

Our Study Programme offers a specialised programme for with a Special Educational Need / EHCP. We offer a personalized programme for each learner to help them achieve their future goals. Progression opportunities include further education, supported internships, apprenticeships/traineeships, voluntary work and employment.

We are based at Jarrow Hall (formerly Bede's World) in Jarrow and have a small farm with livestock you will have the opportunity for hands on practical work with the animals and around the farm site. Delivery also takes place from our community facility/café at Marsden Road Health Centre

As part of the Study Programme we also offer Functional Skills maths and English. You will be offered work placements/work experience as part of their programme to help them develop their skills for working life and independent living.

Work experience and employability skills are based on future goals, as outlined in learner's EHCP. Work placements are secured in appropriate and meaningful locations. Support is personalised to needs of the learners and reduced gradually to ensure success.



Enrichment is a really important part of the programme and is learner led. In the past learners have taken part in social action projects, indoor and outdoor sports and adventure activities, visits to museums, galleries and restaurants.

Our learners also have the opportunity to take part in the NCS (National Citizenship Service) programme.

The programme runs over an academic year – from September through to July and learners attend 4 days a week, 9.30 – 3.30.

## How to apply

Before you apply, taster sessions will be organised for you to visit the college and get a feel for the course. Groundwork will then work with you to develop an individual transition programme with you prior to induction to ensure you are supported into enrolment.

### Contact: Rachel Kitson

✉ [rachel.kitson@groundwork.org.uk](mailto:rachel.kitson@groundwork.org.uk)

☎ 07894 256058

# Gateshead College (Project Choice)

## What is on offer:

Gateshead College's Project Choice is a supported training programme for young people with learning difficulties, disabilities and autism.

Our class sizes are smaller so than you can get more one to one support. Help from learning support staff as well as a teacher is available. If appropriate, you will be met when you come into college by your key support and teaching staff and you will have someone with you until you are picked up or leave college.

Project Choice is an award-winning programme that will provide you with the skills and experience you need to get into work. The programme is delivered by Gateshead College, with the support of private sector businesses. Through Project Choice, you'll have the opportunity to gain the skills and qualities you need to get a job. Our team will work with you to help you learn how to work as well as you can. As part of your study programme you will work towards gaining a qualification in employability skills which will support the practical tasks you carry out in your work placement.

You will also develop your maths and English skills as part of your programme, as these are key skills that employers look for. Project Choice programmes are based at our Baltic Campus and work experience takes place offsite with a local placement partner.



## What skills will I gain from the programme?

- Independent living skills including daily living, health, relationships, community, leisure, travel and mobility.
- Communication, maths and English skills.
- Opportunities to get involved in arts, sport and leisure.
- Lots of practical skills through work preparation and work experience and a chance to try practical areas such as: catering and hospitality, sport, ICT and performing arts.
- Experience in the workplace whilst on work placements.

## How to apply

If you're interested in Project Choice please call or or send us an email.



### Contact: Kloe Wilson

✉ [projectchoice@gateshead.ac.uk](mailto:projectchoice@gateshead.ac.uk)

☎ 0191 490 2427

➡ [www.gateshead.ac.uk/welcome/project-choice](http://www.gateshead.ac.uk/welcome/project-choice)



# South Tyneside College

In addition to Mainstream provision, South Tyneside College have a range of foundation programmes which are tailored to meet the needs of students with a range of learning difficulties from mild/moderate to severe and including students with autistic traits.

## How to apply

**Contact: Alyson Shields**

✉ [alyson.shields@tynecoast.ac.uk](mailto:alyson.shields@tynecoast.ac.uk)

➦ [www.stc.ac.uk/foundation-learning](http://www.stc.ac.uk/foundation-learning)



# Foundation of Light

In addition to Mainstream provision, Foundation of Light have a range of foundation programmes which are tailored to meet the needs of students with a range of learning difficulties from mild/moderate to severe and including students with autistic traits.

## How to apply

**Contact: Neil Jones**

✉ [Neil.Jones@foundationoflight.co.uk](mailto:Neil.Jones@foundationoflight.co.uk)

☎ 0191 563 4777



**Please note:** Other local Colleges have Supported, or Foundation Learning offers for young people with SEND. For more information about this provision please refer to the College website or contact the College direct.

## Useful contacts

It's fine to still feel unsure about which route you'd like to take and may want to do some additional research before speaking to a Connexions Advisor or Careers Advisor, why not head to the following websites to find out more:

### Amazing Apprenticeships

[www.amazingapprenticeships.com](http://www.amazingapprenticeships.com)

Here you'll find information and resources to help you further understand what an apprenticeship is and how you can access them. You can also find out about your local Young Apprenticeship Network.

### Find an Apprenticeship

[www.findapprenticeship.service.gov.uk](http://www.findapprenticeship.service.gov.uk)

Search for apprenticeships in England as well as register for alerts so you don't miss your next opportunity.

### Career Coach

[www.southtyneside.emsicc.com](http://www.southtyneside.emsicc.com)

Career Coach helps you explore hundreds of career profiles, begin to create your CV with our interactive CV builder and take a career assessment to see which careers and job roles are suited to your personality.

### South Tyneside Local Offer

[www.sendlocaloffer.southtyneside.gov.uk](http://www.sendlocaloffer.southtyneside.gov.uk)

Designed to help you find the best support for children and young people aged 0 to 25 who have Special Education Needs and Disabilities (SEND).

### UCAS

[www.ucas.com](http://www.ucas.com)

Explore your post-16 options, possible funding and career ideas. You can also discover more information about Higher Education.

### National Careers Service

[www.nationalcareers.service.gov.uk](http://www.nationalcareers.service.gov.uk)

Explore hundreds of career roles profiles, take a skills assessment and find your future.

**connexions**

SOUTH TYNESIDE

#### For more information:

 [Connexions@southtyneside.gov.uk](mailto:Connexions@southtyneside.gov.uk)

 **0191 424 6657 / 0191 424 6690**

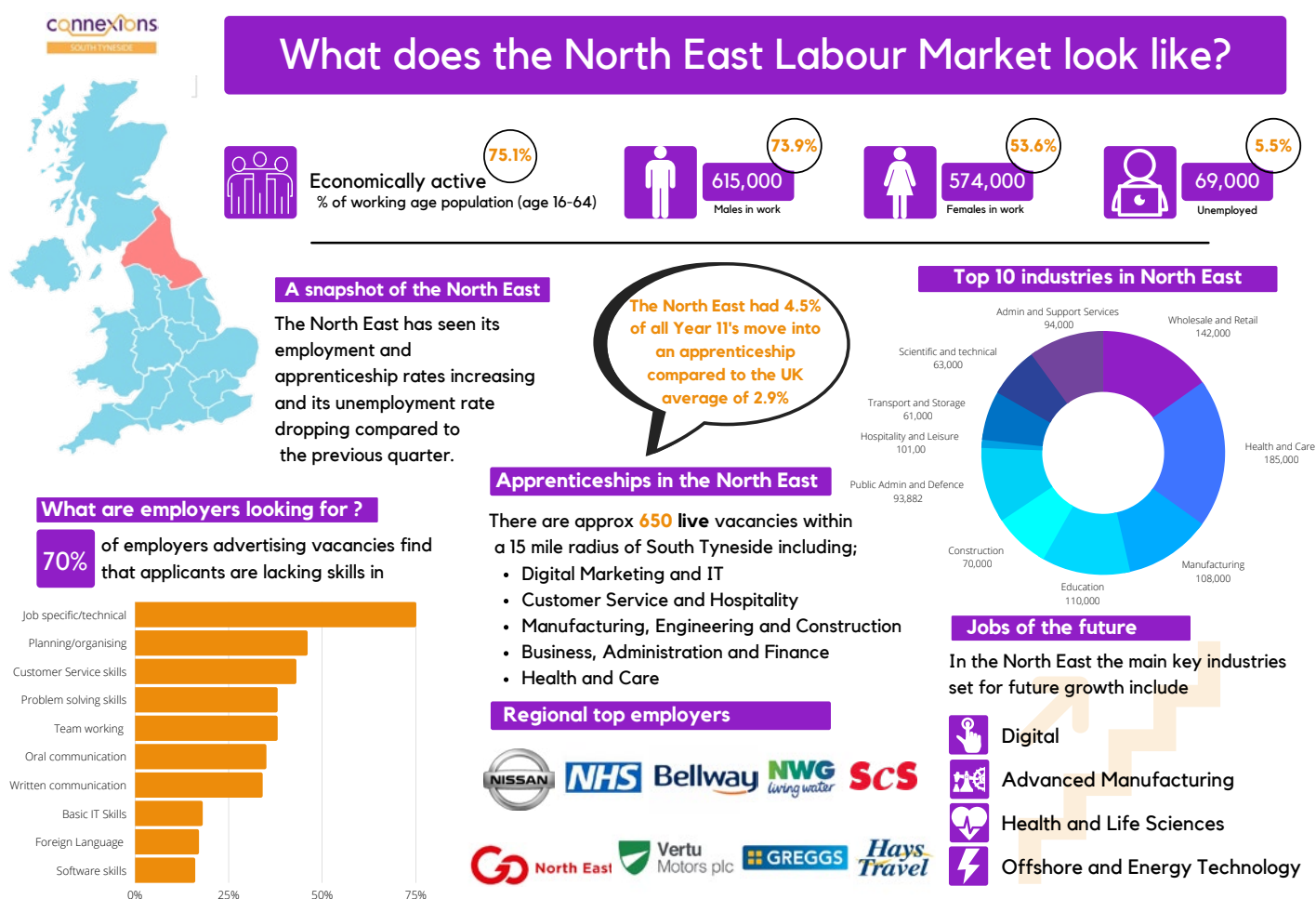
 [www.facebook.com/CnxSouthTyneside](https://www.facebook.com/CnxSouthTyneside)

Understanding what employment opportunities are available to you after education is important in helping you decide what route is the best for you.

One of the terms you might hear a lot as you undertake your decision making is LMI – that stand for Labour Market Information and in short, refers to any information that is relevant about the current state of the jobs market. **This can include information like:**

- How many jobs there are
- How much you could expect to earn
- Career progression opportunities
- The types of jobs that exist and what they involve
- The skills that are currently in demand or might be over the next few years.

LMI helps to demystify the jobs market. It helps take the confusion out of career planning, job hunting, career progression and education/training decision making. When you take into consideration accurate and up to date information, you are better equipped to make an informed decision about your future.





notes...

connexions

SOUTH TYNESIDE

**For more information:**

 | 0191 424 6657 / 0191 424 6690

 | [Connexions@southtyneside.gov.uk](mailto:Connexions@southtyneside.gov.uk)

 | [www.facebook.com/CnxSouthTyneSide](https://www.facebook.com/CnxSouthTyneSide)